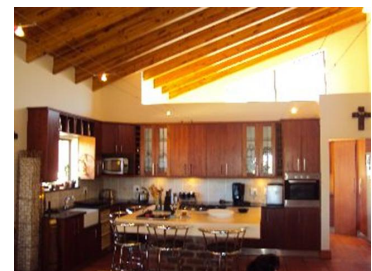




EVERYTHING WE TOUCH TURNS TO SOLD

PORT ELIZABETH
LOVEMORE HEIGHTS



Price - R 2,300,000

Wine Cellar and fireplace with anthracite stove. Secure and well maintained estate. Fantastic views! Fully enclosed and perfectly located.



FEATURES:

- | | | |
|--------------|---|-------------|
| • Bedrooms: | 3 | House size: |
| • Bathrooms: | 2 | - 486 sqm |
| • Garages: | 2 | Stand size: |
| | | - 956 sqm |
| | | Web code: |
| | | - 2666063 |

Tobie Ferns
Contact Number: 0836499946

E-mail: portelizabeth@aidasa.co.za

